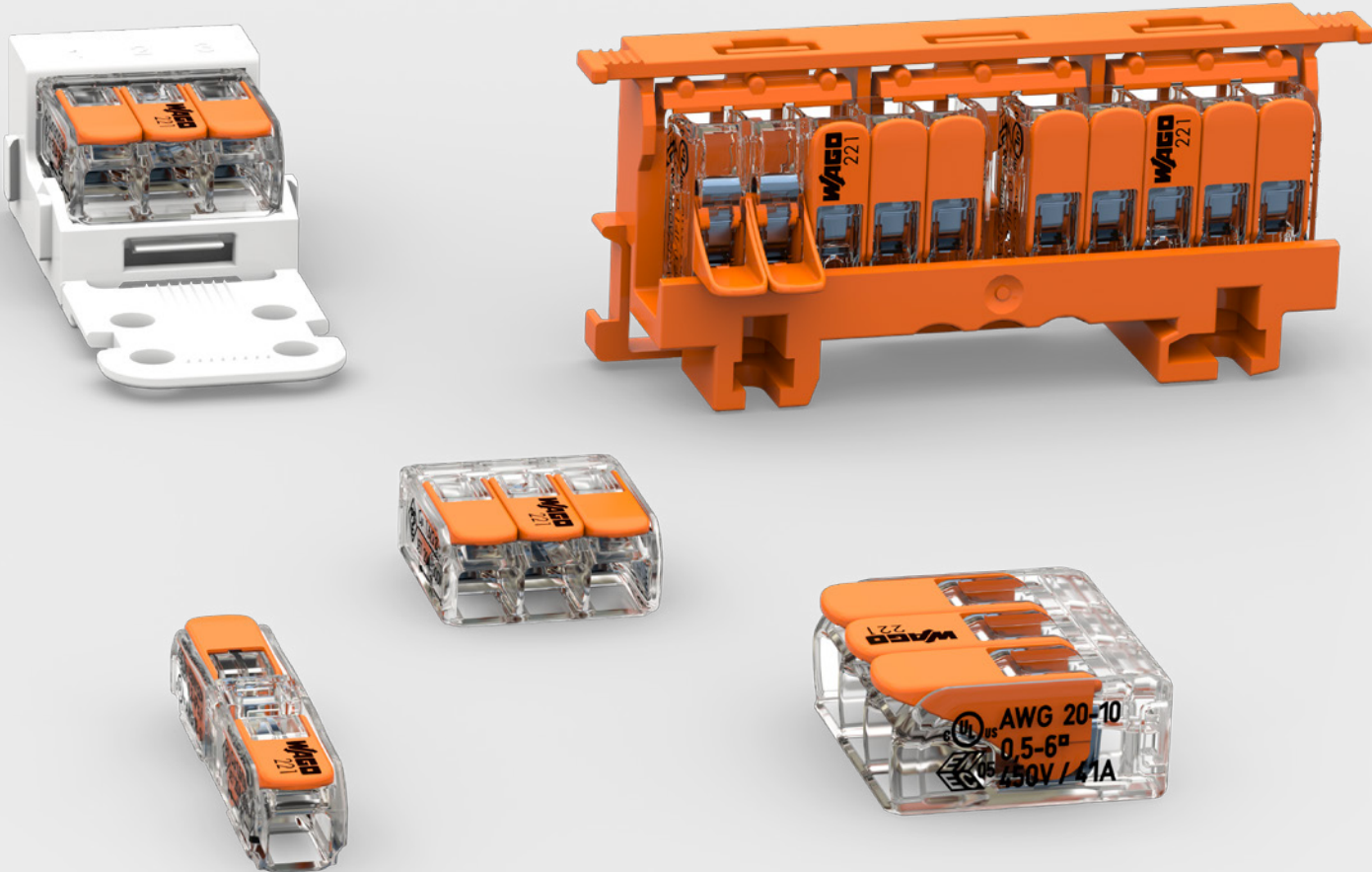




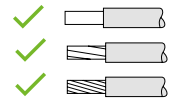
221 Series

The Way to Connect!



WAGO 221

WAGO 221: COMPACT Splicing Connectors for All Conductor Types up to 6 mm²



221 – 6mm² variant

0.5 ... 6 mm²
(20 ... 10 AWG)
450 V / 4 kV / 2
41 A

Ambient air temperature:



221-612 221-613 221-615
221-682(Ex) 221-683(Ex) 221-685(Ex)



- 221-510
- 221-510/000-006
- 221-510/000-053

Mounting carrier,
for 2-, 3- and 5-wire connectors,
6mm² variant

Jumper



With locking function:
221-941, black
221-941/000-006, blue



Without locking function:
221-942, black
221-942/000-006, blue

400V / 41A
For 221, 4 mm² and 6 mm²



222-505
Strain relief plate,
mounts on
221-500



222-510
Angled DIN-rail
adapter,
for horizontal
mounting of
221-500 carrier
on DIN-35 rail

221 – 4mm² variant

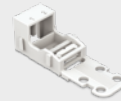
0.14 ... 4 mm² f (24 ... 12 AWG)
0.2 ... 4 mm² r,s (24 ... 12 AWG)
450 V / 4 kV / 2
32 A

Ambient air temperature:
max. 85 °C (T85)



- 221-500
- 221-500/000-006
- 221-500/000-053

Mounting carrier, for
2-, 3- and 5-wire
connectors,
4 mm² variant



221-502
Mounting carrier,
for 2-wire connectors,
screw mounting



221-503
Mounting carrier, for
3-wire connectors,
screw mounting



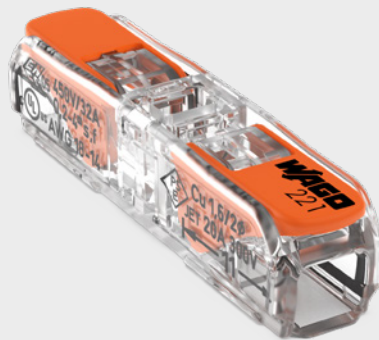
221-505
Mounting carrier, for
5-wire connectors,
for screw mounting



221-412 221-413 221-415
221-482(Ex) 221-483(Ex) 221-485(Ex)

Through connector with operating lever

221-2411
1-pole, 4 mm²
450 V/32 A, 0.2 ... 4mm² s,f;
0.2 ... 2.5mm² r
600 V/20A, 20/18 ... 14 AWG



For 12 AWG (North America)



221-2401
1-pole, 12 AWG/4 mm²
450 V/32 A, 0.2 ... 4mm² s;
0.2 ... 2.5mm² r; 0.34 ... 4mm² f
600 V/20 A, 20/18 ... 12 AWG

Mounting carrier for Inline Splicing Connectors*



221-2523: 3-pole
221-2521 ... 221-2525
(1- ... 5-pole)



221-2503: 3-pole
with strain relief
221-2501 ... 221-2505
(1- ... 5-pole)

* Mounting carrier, for 1 ... 5 connectors, available for different mounting options

WAGO Gelbox

For max. 4mm² connectors
e.g., 221-41x/2273-20x



207-1331



207-1332



207-1333

For max. 6mm² connectors,
e.g., 221-61x



207-1431



207-1432

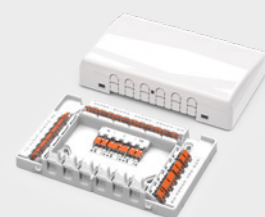


207-1433

Rated surge voltage: 2.5 kV
Insulation resistance: 5 MΩ
Ambient air temperature: max. 85 °C
Protection class: IPx8

Observe the permissible combinations of splicing connectors and gelbox!
Observe the rated data of the splicing connectors

Junction Box



207-4301

For 221 Series
splicing
connectors,
4 mm²,
for up to 60
clamping points

Current supply (max.): 18 A
Operating voltage (max.): 450 V
Ambient air temperature: -25 ... +85 °C
Protection type: IP20

info@wago.com – www.wago.com/221